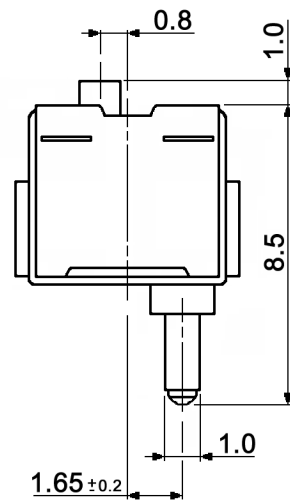
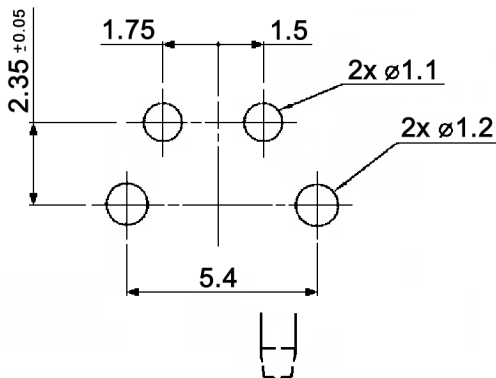


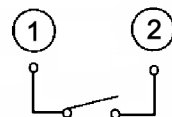
HOLE LAYOUT TOP VIEW



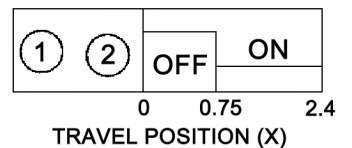
Specifications:

- Contact rating: 0.01A, 5V DC
- Contact resistance: 500mOhm max.
- Insulation resistance: 100MOhm min. at 100V DC for 1 minute
- Dielectric strength: 100V AC (50/60Hz, 2mA) for 1 minute
- Operating temperature: -10°C to +60°C
- Mechanical life: 50 000 cycles min.
- Operating force: 35gf max.
- Soldering heat resistance: bath method: 280 +/-5°C, 5 +/-0.5sec.
- Material: Frame: SPCC, zinc plated
Contact plate: C5210, washing
Terminal: C2680, silver plated
Case / housing: PA46, black
Actuator: LCP, grey

CIRCUIT DIAGRAM



SWITCHING SEQUENCE



Compliance: RohS II (2011/65/EU)

Tolerances: up to 10: ±0.2mm above 10-50: ±0.3mm	Date	Name
	09/07	dr
Rename	04/14	dr
Modifications	Date	Name

DT 103 CP-R

30 12 42

Page

1/1

knitter-switch